

30VP-2 / 50VP-2 VEGETABLE PEELERS



Model 30VP-2



Model 50VP-2

DESIGN

Insinger's Vegetable Peelers are available in two sizes: the 30VP-2 has a capacity of 30 pounds in 45 seconds and the 50VP-2 can peel 50 pounds in only one minute.

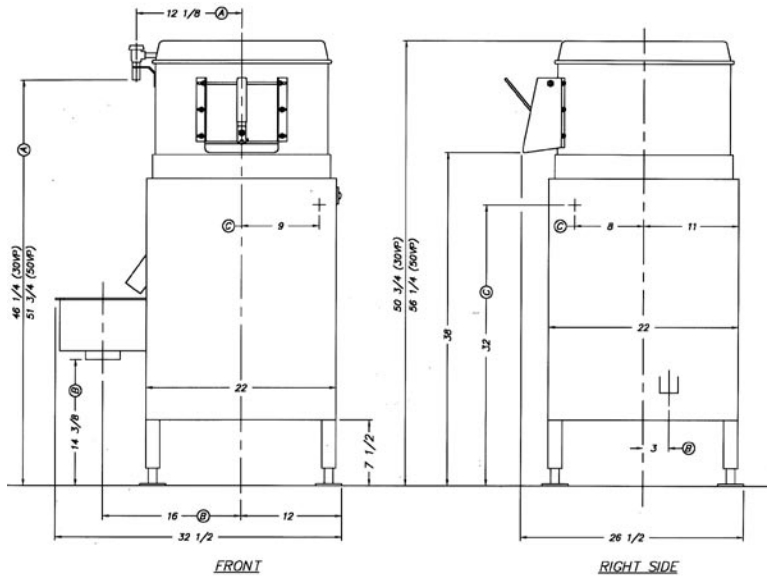
STANDARD EQUIPMENT

- Stainless steel hopper, cabinet, feet, peel trap, screen, disc, and discharge door
- Unique wave pattern s/s disc
- S/S sides, disc and discharge door coated with Insinger's exclusive bonded silicone carbide for fast, accurate peeling

OPTIONAL ACCESSORY EQUIPMENT

- 1 minute timer
- Integral disposer
- Drawer





Note: For all rough in connections see Installation and Layout Detail Drawing.

SPECIFICATIONS

CONSTRUCTION - The hopper, cabinet, feet, peel trap, screen, disc, discharge door and chute are all fabricated from type 304 #18-8 stainless steel. The drain and fill line are made of copper and the hopper cover is made of aluminum.

ABRASIVE DISC - This special Insinger abrasive disc has a unique wave pattern in the stainless steel and a permanently bonded silicone carbide abrasive for long life. The light-weight stainless disc with its stainless hub attachment to alloy shaft prevents corrosion and allows easy removal for thorough cleaning.

DISCHARGE - The stainless steel discharge door and hinge pin incorporates an easy lock-and-release lever. The stainless steel chute is removable for easy cleaning.

DRIVE - Standard frame motor (30VP-2: 3/4 HP. 50VP-2: 1 HP), with "V" belt drive provides direct speed reduction between motor and peeling disc. The "V" belt motor drive design has a shock absorber effect to prevent damage in event of a jam or overload. All bearings are sealed and permanently lubricated.

HOPPER - Stainless steel hopper with silicone carbide abrasive permanently bonded to sides and discharge door. Insinger's unique bonding technique provides quick positive peeling and long service from the abrasive.

FEET - Adjustable stainless steel feet designed to be bolted to almost any type of floor surface.

SWITCH - Toggle type or pushbutton station, located on the right side of the discharge chute as standard.

Shipping weight	Current draw	30VP-2	50VP-2
30VP-2 242 lbs.	amps		
50VP-2 262 lbs.	115/1/60.....	13.8	16.0
	208/1/60.....	7.6	8.8
	208/3/60.....	3.5	4.8
	230/1/60.....	6.9	8.0
	230/3/60.....	3.2	4.2