

## ELIMINATOR 900 WASTE HANDLING SYSTEM

- Automatic self contained waste handling system
- Reduces foodservice waste up to 90%
- Lower labor and hauling costs
- Process water is re-circulated for re-use—saving water and sewage costs
- External silver catch lessens costly silverware replacement
- Complete renewal servicing of wear parts without disturbing either the electrical or plumbing connections
- Capacity is up to 1200 lbs./hour of mixed foodservice waste (food, disposables and paper products)



The Eliminator 900 reduces waste up to 90% by grinding a wide variety of kitchen waste into a dry pulp like material.

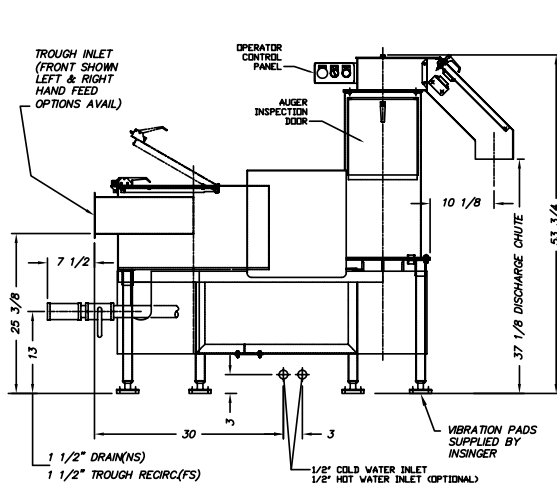
### STANDARD FEATURES

- Total stainless steel construction
- Automatic, 12 nozzle, wash-down system for extractor
- Extractor screw/screen removable from top
- 2 hp TEFC bottom mount extractor drive motor
- 5 hp direct drive cutting system motor
- 1 hp TEFC re-circulating pump
- NEMA-12, carbon steel control panel enclosure
- Integral or remote NEMA-4 push button station
- Single point electrical connection
- Pulper lid interlock switch
- Extractor chute interlock switch
- Automatic shutdown timer for self-cleaning
- Cylindrical extractor for easy cleaning—no corners
- Trough connection
- Re-circulating pump
- Automatic pulper cleaning package with integral wash and rinse cycle
- Permanent trough magnet for silverware catch
- Dual-use cutting blades

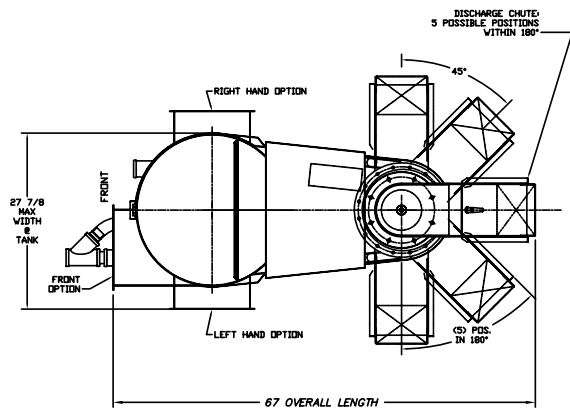
### OPTIONS

- Security package inclusive of:
  - Pulper lid and extractor discharge chute locking rings
  - NEMA-4 stainless steel electronic panel enclosure
  - Tamper proof fasteners
- Hose reel (30 ft. unmounted)
- Remote start-stop station
- Chemical additive pump





REMOTE 20" X 20"  
MAIN POWER PANEL  
NDR SHOWN



Note: For all rough in connections see installation and layout detail drawing.

Capacity Per Hour	1200 lbs. foodservice waste
Tank Capacity	25 gallons
Pulper Motor	5 hp
Extractor Motor	2 hp
Re-circulation Pump	1 hp
Fresh Water Consumption	1-2 gallons per minute cold water 50 gallons per day hot water (optional)
Extractor Gearbox	30:1
Drain	4" minimum floor sink
Shipping Weight	700 lbs.
Current	Full Load AMPS
208/3/60	30
230/3/60	27
460/3/60	14

## SPECIFICATIONS

Utility Requirements:  
Hot or cold washdown water supply 1/2", 6.5 GPM@30psig

Cold water supply, 1/2"  
Fill: 12 GPM @ 30psig  
Run: 1.25 GPM @ 30psig  
Max Run: 7.75 GPM @ 30psig during washdown cycle

Nearby drain 1 1/2" min. with air gap.  
Takeaway strainer basket and/or enzymatic drain drip recommended.

Note: Due to product improvement we reserve the right to change information and specifications without notice.

## SPECIFICATIONS (continued)

### CONSTRUCTION

#### Pulper:

- Trough is 12" wide by 5 3/4" tall. Reduction capability as small as 9"
- Pulping chamber is 24" diameter, type 304 stainless steel. Single piece construction for durability and ease of cleaning.
- Slurry chamber is constructed of two 5/16" 304 stainless steel plates encased in 10 gauge stainless steel.
- Pulper has hinged lid with limit switch and compression latch
- Full stainless steel frame with adjustable vibration isolating feet
- Cutting mechanism is 12" diameter type 304 stainless steel annealed impeller. Cutting blade replacement or adjustment with single allen wrench and no impeller removal. Cutting blades are type 440A hardened to Rockwell C-52. Two rotary blades indexible for double life and five stationary blades for reduced wear.
- Drive motor to be 5 hp ODP direct drive

#### Extractor:

- Extractor discharge chute field adjustable to any 45° angle
- Tank door with draw latch for easy access
- Chute door with limit switch and draw latch
- Shell is 12" diameter one piece rolled cylindrical tank, for ease of cleaning, 14 gauge type 304 stainless steel construction
- Stainless steel screw/screen combination with nylon brush
- 2 hp bottom mount, direct drive TEFC motor with gear reducer
- Screw/screen combination removable from top via socket head cap screws

#### Miscellaneous Features:

- Integrated tubular frame with height adjustable feet and vibration isolator pads
- All motors, valving and piping are located in shrouded bottom frame work
- Multiple configurations to accommodate most layouts
- Pre-wired to unit mounted J-Box and pre-plumbed for ease of installation