

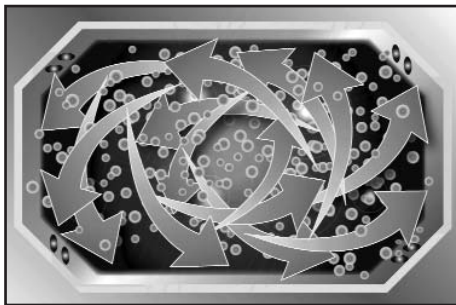


QUADJET AQUA-SCRUBBER AUTOMATIC POT & PAN WASHING SYSTEM



DESIGN

Patent pending automatic scrub sink reduces labor cost up to 56%. The 8 jets supplied by a powerful 2 HP TEFC pump, and the innovative angled corners, keep the cookware moving in a turbulent whirlpool motion. No corners-no jams! The 4 angled corners have 2 jets in each corner. Custom build a QuadJet Aqua-Scrubber or choose from two pre-engineered systems- the Dash 109 or the Marathon 140.



The unique whirlpool action from 8 jets, 2 jets in 4 angled corners, get pots and pans cleaner faster.

STANDARD EQUIPMENT

- Patent Pending
- Heavy duty pump with a 2 HP TEFC motor
- Basket style high capacity lever action waste drain
- Easy clean seamless front skirt
- Fast flow mixing faucets
- Single point electrical connection: motor, controls, heater
- Stainless steel utensil basket
- Dual water temperature settings- 110 low/130 high
- 2.5 kw heater with low water protection and dual temperature control
- Welded support legs with s/s feet
- 300 series stainless steel
- NEMA 4X control panel enclosure

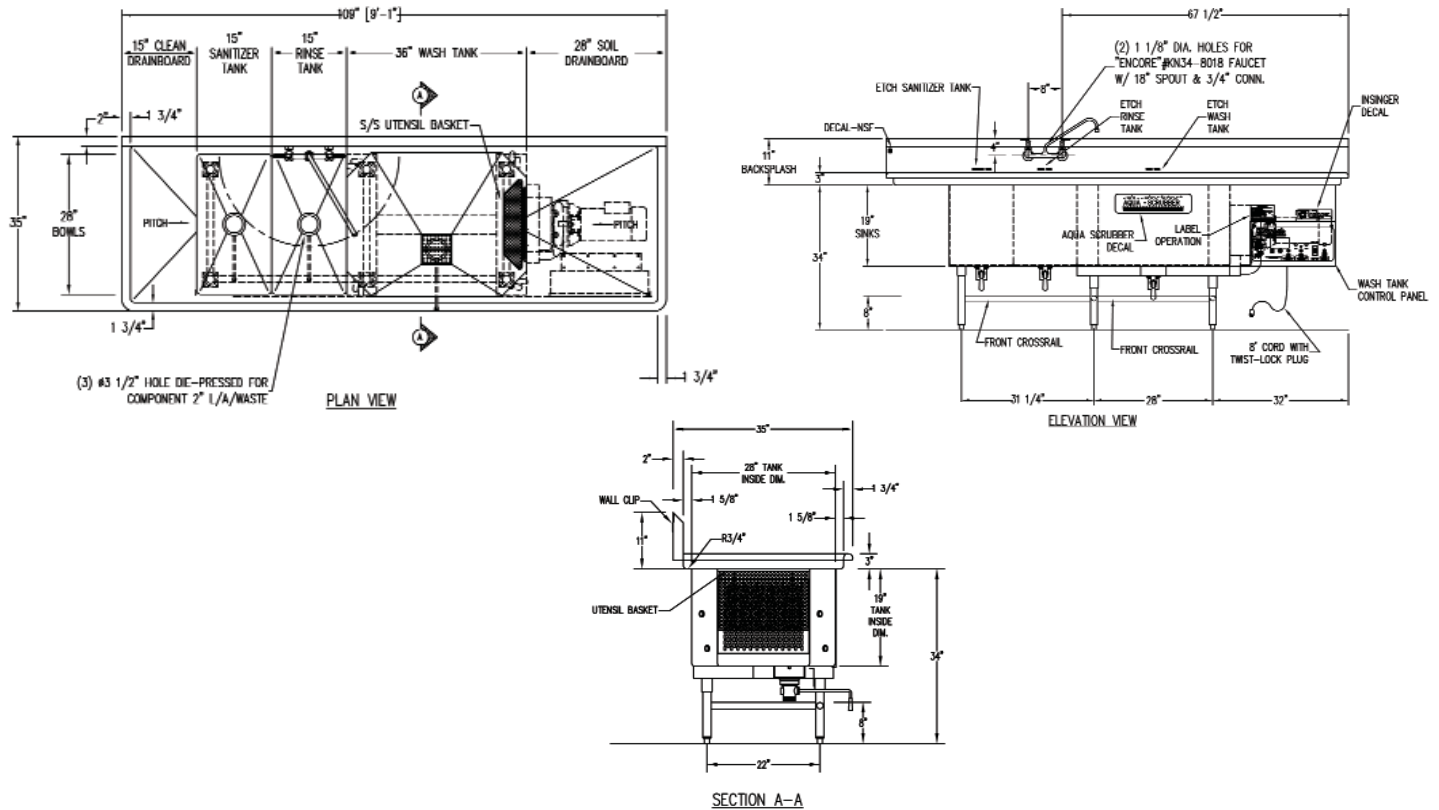
OPTIONAL EQUIPMENT

- Undershelf on clean end drain board
- Sink overflows
- 1 to 8 hour pump timer
- Scrap trough in drainboard
- Overshelf with mounting brackets (12" increments, 36" and up)
- End splash
- Disposal and cone (in soiled drainboard, 48" minimum length)
- Hot water sanitizing booster heater
- Scrapper drainboard with pre-rinse faucet
- Shelves- (cantilevered or wall mounted)



6245 State Road
Philadelphia, PA 19135-2995
215-624-4800
215-624-6966 FAX
800-344-4802
www.insingermachine.com





Note: For all rough in connections see installation and layout detail drawing

SPECIFICATIONS

CONSTRUCTION- Entire unit constructed of 300 series polished stainless steel.

SINKS AND DRAINBOARDS- Constructed of 14 gauge stainless steel. All interior corners are covered to 3/4" radius. Top is 14 gauge stainless steel all welded with 11" high backsplash and 3" high splash on front and sides with a 1 3/4" rolled edge.

WASH SINK-Consists of side mounted intake manifold and specially designed nozzles strategically placed in corners for maximum scrubbing action. Intake manifold includes hinged access panel to facilitate cleaning of the intake chamber, heater and probes.

PUMP- The pump is heavy duty stainless steel construction with a 4" diameter intake and 3" diameter discharge. The motor is 2 HP totally enclosed, fan cooled with permanently sealed bearings.

SUPPORT- The wash sink is supported by heavy gauge stainless steel channels welded to the underside of the sink. H frame leg assemblies are removable and have stainless steel adjustable bullet feet.

CONTROL PANEL- Control enclosure is made of 300 series stainless steel, completely welded and waterproof (NEMA 4X). On/off power switch, dual water temperature switch (low and high), on/off pump motor switch and reset switch. Heavy duty pump contactor and overload. Heavy duty grounded plug. Controls labeled in English and Spanish.

PRE-ENGINEERED SYSTEMS- The Dash 109 and Marathon 140.

Motor Size	Heater Size	Shipping Weight	Current Draw AMPS	Heater	Pump & Controls	Total
2 HP	2.5 kw	Dash 109 557 lbs. Marathon 140 650 lbs.	208/1PH/60HZ.....	12.0.....	9.6.....	21.6
			220-240/1PH/60HZ.....	10.9.....	8.9.....	19.8
			208/3PH/60HZ.....	6.9.....	5.9.....	12.8
			220-240/3PH/60HZ.....	6.3.....	5.6.....	11.9
			440-480/3PH/60HZ.....	3.1.....	2.8.....	5.9